

## FALLSOFT - Technical Sales Sheet: 029

**Product Code: GM-200A**

**Standards: EN795 Type A, ANSI Z359.1, OSHA 1928(k)**






### Product Features

- Top anchor swivel allows for 360° degree use.
- Locks into anchor base plates with 2 locking pins.
- Lightweight Aluminium construction.
- Simple to inspect and maintain.
- Tie-off post has built-in shock absorbing features.
- Vertical structure does not rotate when used.
- Comes with carry handle.
- Hardware: grade 5 steel zinc plated.
- Optional 16"/30"(40.8 cm/ 76.5 cm) davit arm on request.
- User friendly.

### Product Specification

- Three users capacity.
- Maximum working load: 350lbs/159Kg per person.
- Weight 26lbs/11.7Kg.
- Max. arrest force rating of SRL or tear-out shock absorbers 900lb/4kN - 1350lb/6kN.
- Must be used with a full body harness.
- Support structure must withstand load

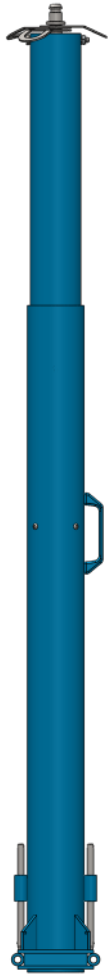
See data table on page 2 for model & part codes

	FALLSOFT		  <p>ISO 9001:2015</p> <p>Cert No.-9976-QMS-001</p>
	Model	GM200A	
<b>Description:</b> Three person tie-off post			

# FALLSOFT - Technical Sales Sheet: 029

Product Code: GM-200A

Standards: EN795, ANSI Z359, OSHA 1918.25(k)



Max. width 8 1/2" / 2100mm



77" / 1950mm

Dimensions excluding base plates

Part Code	Description
40007	GM200A Three person tie-off post



FALLSOFT

Model

GM200A



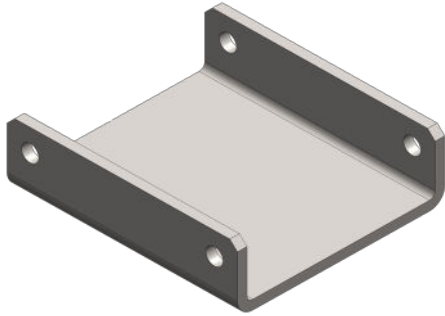
Cert No.-9976-QMS-001

ISO 9001:2015

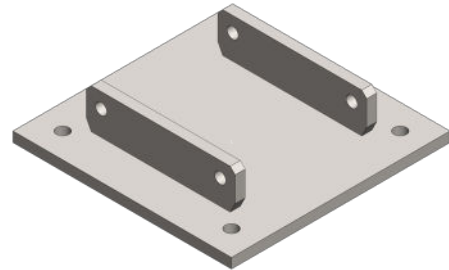
Description: Three person tie-off post

## FALLSOFT - Technical Sales Sheet: 029

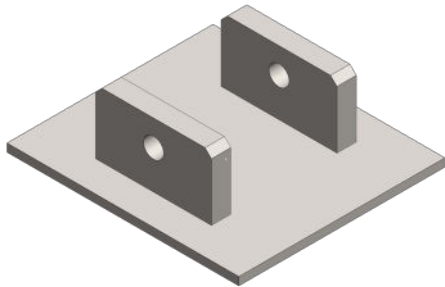
### Base Plate Options



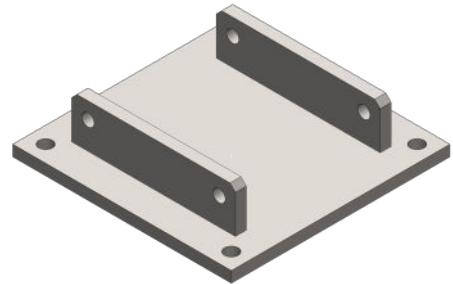
- Model: GM135 For use on transformers.
- Double pin style plate that is welded to top surface of transformer for permanent mounting
- Dimensions: 6 3/4 " x 7 1/2" / 172mm x 192mm
- Weight: 6.8lbs / 3.1Kg
- Product Code: 40008



- Model: GM135CP For use on transformers.
- Double pin style plate that fits Waukesha Power transformers.
- Bolted down to existing 1"(2.5cm) studs & may be removed after use.
- Dimensions: 11" x 11" / 280mm x 280mm
- Weight: 21.2lbs / 9.6Kg
- Product Code: 40009



- Model: GM136 For use on transformers.
- Uni-Hoist style (UH4000-2) weld on plate that is welded to top surface of transformer for permanent mounting.
- Some Pennsylvania Power Transformers have the 2 mounting lugs welded to the top plate.
- Dimensions: 8" x 9" / 205mm x 230mm
- Weight: 11lbs / 5Kg
- Product Code: 40010



- Model: GM138 For use on Transformers.
- Double pin style plate that is bolted to top surface of transformers.
- Dimensions: 10" x 10" / 254mm x 254mm
- Weight: 18.2lbs / 8.3Kg
- Product Code: 40011



FALLSOFT

Model

GM



Cert No.-9976-QMS-001

ISO 9001:2015

Description: Three person tie-off post